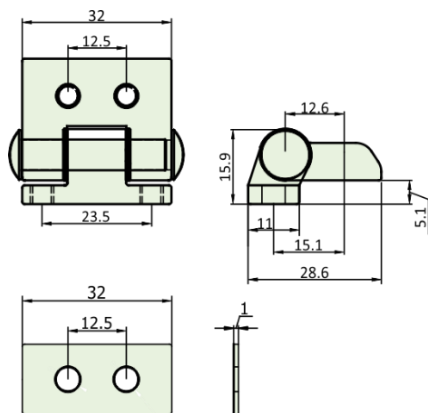


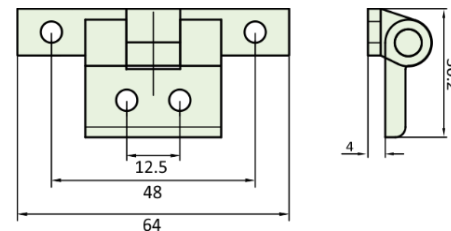
## PRODUCT FEATURES & TECHNICAL INFORMATION

- Solid natural brass hinge for use on top hung windows
- B528M features concealed screws to provide higher security
- B528M is suitable for windows which have 5mm between the fixed and moving frame. Supplied with packer to change this dimension to 4mm
- B528R is often used for restoration, this hinge can be fitted as a replacement hinge whilst the window is still fitted in the building.
- B528R is mainly suitable for 'F' (SMW) section windows which have 4mm between the fixed and moving frame.
- B528 are suitable for M5 fixing screws
- Hinges are non-handed

### B528 Slim Line Top Hung Hinges



B528M & Dimensions



B528R & Dimensions